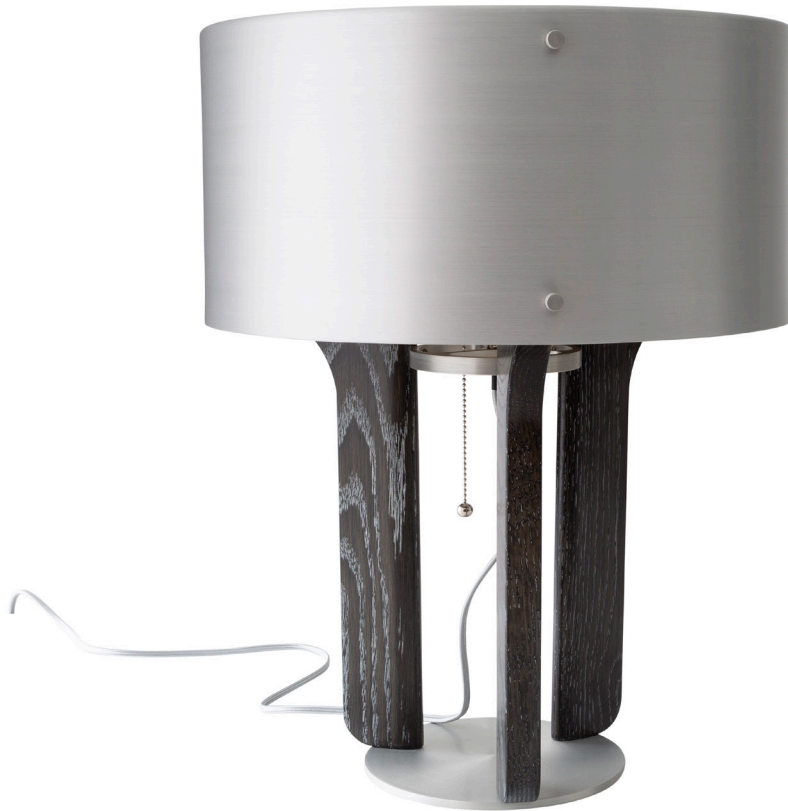




617 Van Sinderen Ave. Brooklyn, NY 11207  
T +1 347 889 7570  
info@mfdnyc.com

## POMMER LAMP

---



### DESCRIPTION

---

Transitioning between the contrasting textural elements of anodized aluminum and satin finished solid wood, the graceful dome of the Pommer collection—available as a pendant, floor, or table lamp—offers a unique form that can only be achieved through skilled craftsmanship. Pommer reflects the belief shared with you, our design partners, that beauty should emanate from an object's thoughtful materiality and form above all else.

### YEAR OF DESIGN

2013

### MATERIAL

Spun anodized aluminum shade with sculpted oak or walnut legs.



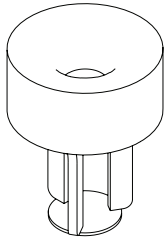
617 Van Sinderen Ave. Brooklyn, NY 11207  
T +1 347 889 7570  
info@mfdnyc.com

## POMMER LAMP SERIES

---

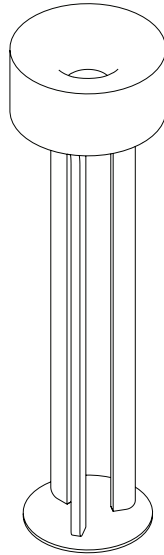
### POMMER TABLE LAMP

17" Diameter x 22.25" Body Height  
700 Lumens LED / 2700K



### POMMER FLOOR LAMP

17" Diameter x 62" Body Height  
700 Lumens LED / 2700K



## SPECIFICATIONS

---

- The Pommer Lamp is comprised of an anodized metal shade with sculpted wood legs.
- Lamping: One E26 incandescent socket (120V)
- Dimmable A19 LED half-chrome bulb included (60W equivalent). Warm White 2700K.
- Bulb Life: Average 30,000 Hours
- UL certification available in 120V: For additional cost.
- International Spec: "Key-less" socket (no pull chain). One E27 incandescent socket (240V). Requires on-cord foot switch. Cord is black plastic. Switch is located 12" from base.

## AVAILABLE FINISHES

---

- Wood Options: Oak or Walnut w/ standard MFD satin finishes.
- Shade & Base (Anodized Finishes): Silver, Bronze, Rosegold, Brass, Graphite, Black.
- U.S.A. Cord Options: Fabric covered lamp cord: Bronze, Silver, Black.
- International Cord: Black plastic lamp cord, with requisite on-cord foot switch.