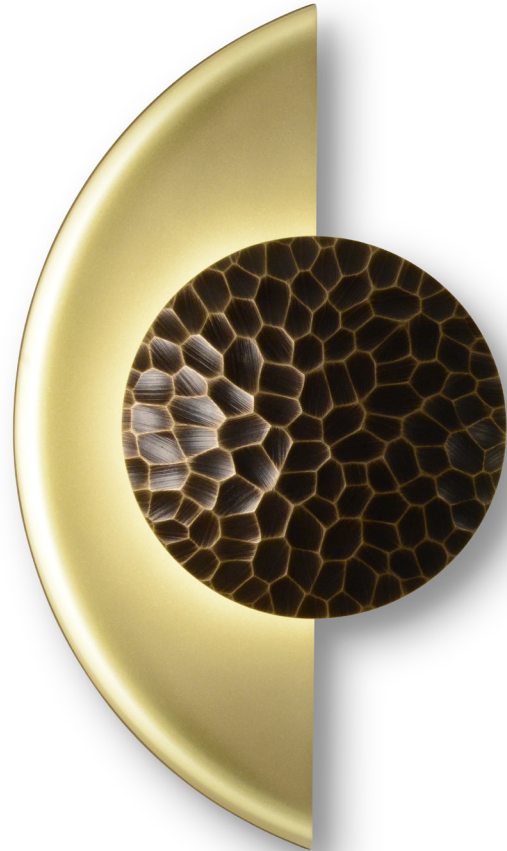




Helix Sconce (Crescent)

MATTHEW FAIRBANK
— DESIGN —



Description The Helix Sconce is a dimmable LED wall sconce featuring a crescent shaped dome and etched bronze shield. The shape of this sconce creates a stunning array of shadows and reflections. The example shown above features a sandblasted brass body and antique bronze shield. The fixture requires no external drivers and is compatible with ELV reverse phase dimmers.

Year of Design 2018

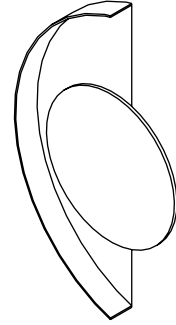
Material Sandblasted Brass Frame & Faceted Shield.



Helix Sconce (Crescent)

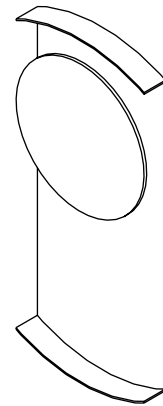
Helix Sconce (Crescent)

650 Lumens LED / 3000 K
Solid Brass Frame & Shield
8"W x 2.5"D x 13"H



Helix Sconce (Vertical)

650 Lumens LED / 3000 K
Solid Brass Frame & Shield
6.25"W x 2.5"D x 14"H



Specifications

- The Helix Sconce is a dimmable LED wall sconce featuring a crescent shaped dome and etched bronze shield.
- Both variations can be wall mounted either vertically or horizontally.
- Custom Sizes are not available.
- LED connects directly to line voltage, no external driver needed / Flicker free AC operation.
- Color temp 3000 K. 650 Lumen output. 50,000 Hours Life Span.
- Compatible with current (ELV) reverse phase dimmers. All modules use UL recognized components.

Available Finishes

- Body Metal Finishes: Sandblasted (Brass/Nickel), or Gloss Enamel (Black/White).
- Accent Metal Options: Satin Brass (SB), Antique Brass (AB), Blackened Brass (BB), Satin Nickel (SN), Blackened Nickel (BN), Polished Nickel (PN), Polished Brass (PB).