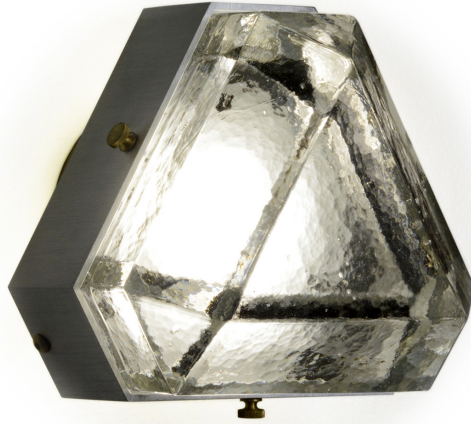




*Vega Sconce / Ceiling Mount*

MATTHEW FAIRBANK  
DESIGN



*Description* The Vega Sconce / Ceiling Mount is a geometric, modular, contemporary lighting fixture. Vega is suitable for installation on the ceiling, wall, and for wet locations. The body is made from extruded aluminum with brass accents and the diffuser is available in cast glass or carved onyx. No driver is necessary since Vega is outfitted with fully dimmable, warm white LEDs, that operate directly off of line voltage.

*Year of Design* 2016

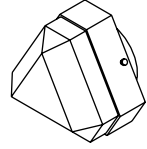
*Material* Anodized Aluminum body with Carved Onyx or Cast Glass diffuser.



*Vega Sconce / Ceiling Mount:  
Available Sizes & Product Codes*

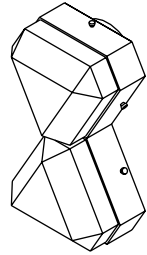
---

Vega Sconce Uno  
7.5"W x 6.5"H x 5.5"D  
650 Lumens LED / 2700 K



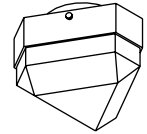
---

Vega Sconce Due  
13"L x 7.5"W x 5.5"D  
1300 Lumens LED / 2700 K



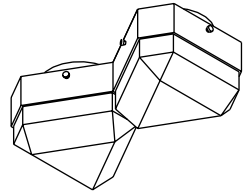
---

Vega Ceiling Mount Uno  
7.5"W x 6.5"H x 5.5"D  
650 Lumens LED / 2700 K



---

Vega Ceiling Mount Due  
13"L x 7.5"W x 5.5"H  
1300 Lumens LED / 2700 K



---

*Specifications*

- Connect directly to AC, no external driver needed / Flicker free AC operation.
- Color temp 3000k.
- 50,000 Hours Life Span.
- 650 Lumen output (single fixture) / 1300 Lumen output (double fixture).
- Compatible with current (ELV) reverse phase dimmers.
- All modules use UL recognized components.

*Available  
Finishes*

- Body Finishes: Standard Anodized (Bronze/Silver/Gold/Black), Gloss Enamel (Black/White), or Mirror Polished Nickel.
- Accent Metal Finishes: Satin Brass (SB), Antique Brass (AB), Blackened Brass (BB), Satin Nickel (SN), Polished Nickel (PN), Polished Brass (PB).
- Diffuser Finishes: White Onyx, Honey Onyx, Clear Glass, or Smoke Glass.